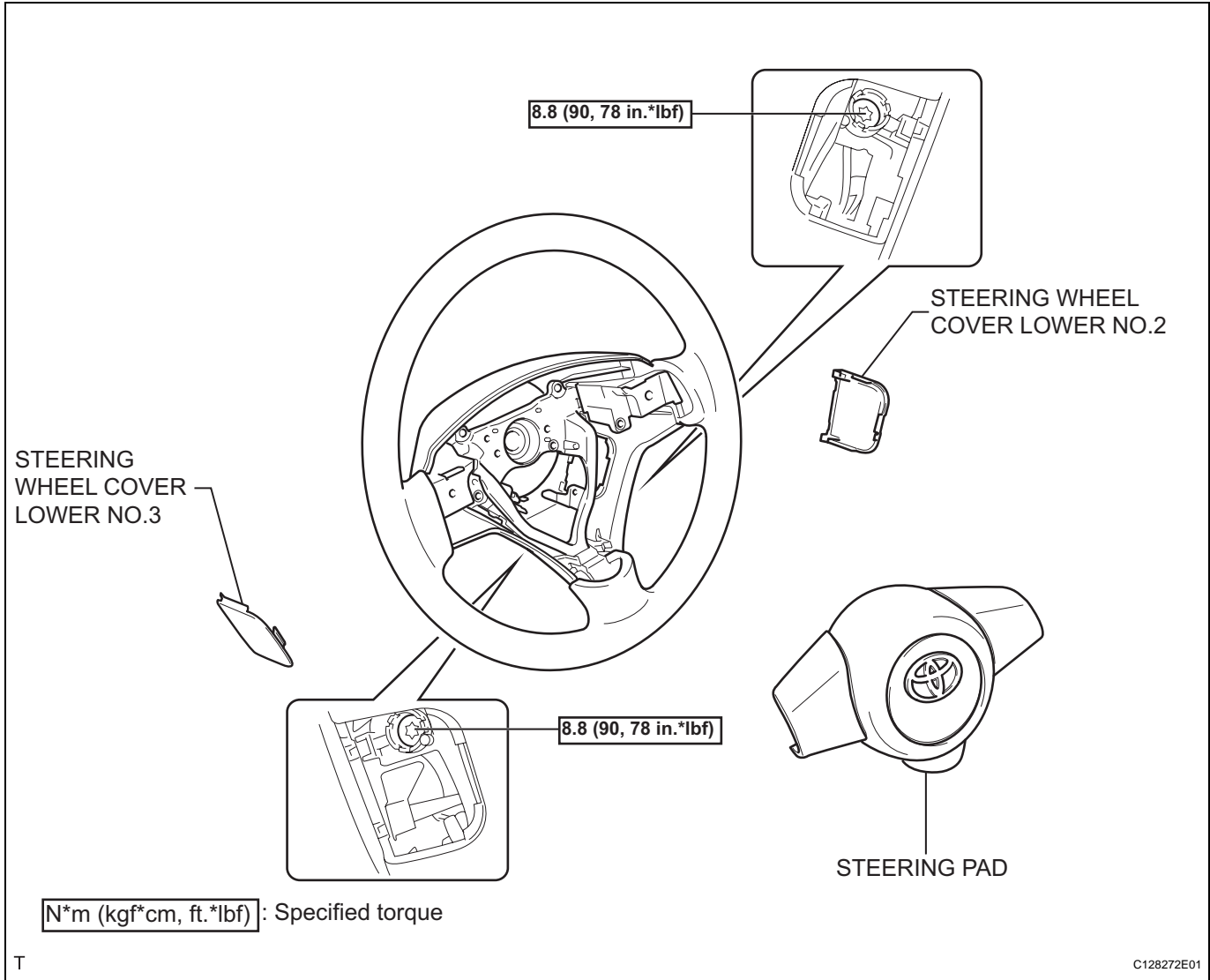


STEERING PAD

COMPONENTS

RS

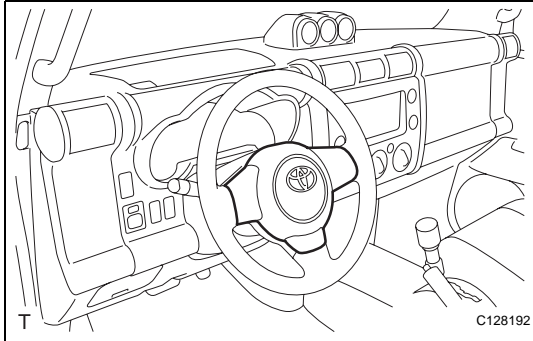


T

ON-VEHICLE INSPECTION

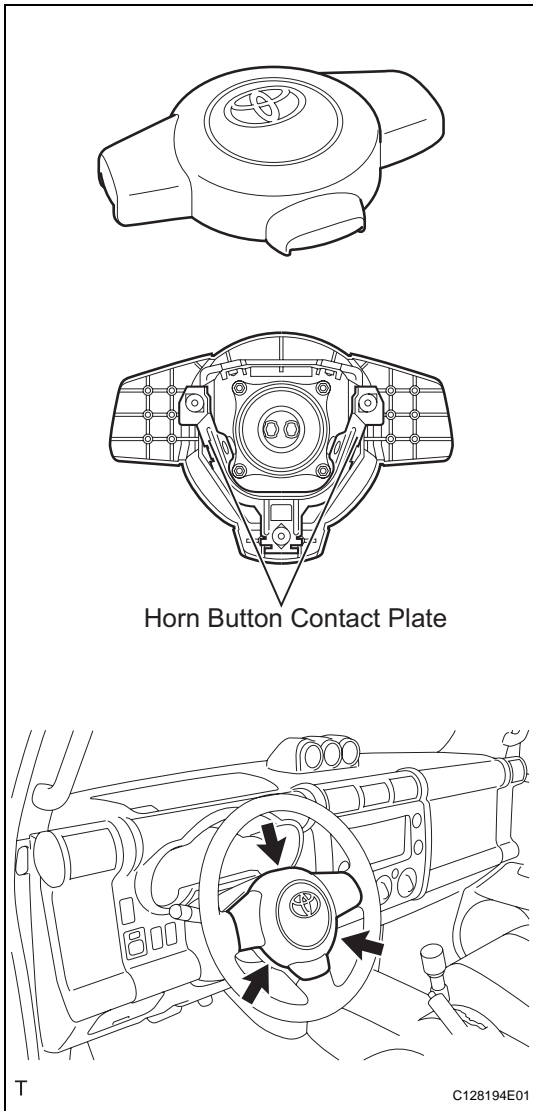
1. INSPECT STEERING PAD (VEHICLE NOT INVOLVED IN COLLISION)

- (a) Perform a diagnostic system check (See page [RS-36](#)).
- (b) With the steering pad installed on the vehicle, perform a visual check. If there are any defects as mentioned below, replace the steering pad with a new one:
Cuts, minute cracks or marked discoloration on the steering pad top surface or in the grooved portion.



2. INSPECT STEERING PAD (VEHICLE INVOLVED IN COLLISION AND AIRBAG HAS NOT DEPLOYED)

- (a) Perform a diagnostic system check (See page [RS-36](#)).
- (b) With the steering pad removed from the vehicle, perform a visual check. If there are any defects as mentioned below, replace the steering pad or steering wheel assembly with a new one:
 - Cuts, minute cracks or marked discoloration on the steering pad top surface or in the grooved portion.
 - Cracks or other damage to the connectors.
 - Deformation of the steering wheel assembly.
 - Deformation of the horn button contact plate of the steering pad.
 - There should be no interference between the steering pad and steering wheel assembly, and the clearance should be uniform all the way around when the new steering pad is installed on the steering wheel assembly.



CAUTION:

For steering pad removal and installation procedures, see pages [RS-345](#) and [RS-346](#). Be sure to follow the correct procedure.

REMOVAL

1. PRECAUTION

CAUTION:

Read "PRECAUTION" thoroughly before servicing (See page RS-1).

2. DISCONNECT CABLE FROM NEGATIVE BATTERY TERMINAL

CAUTION:

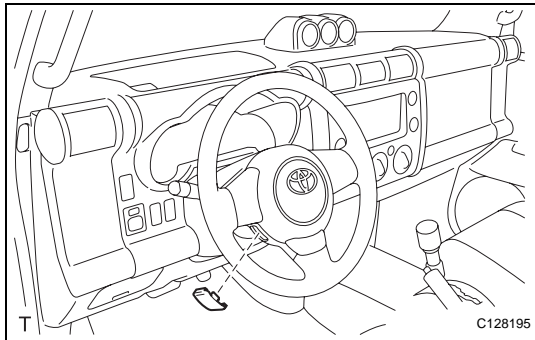
Wait for at least 90 seconds after disconnecting the cable to prevent the airbag from working.

3. REMOVE STEERING WHEEL COVER LOWER NO.3

- (a) Using a thin-bladed screwdriver, remove steering wheel cover lower No.3.

HINT:

Tape up the screwdriver tip before use.

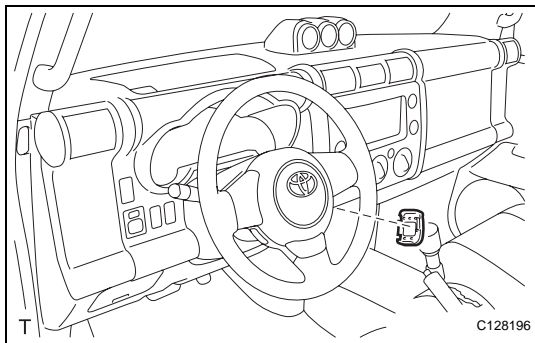


4. REMOVE STEERING WHEEL COVER LOWER NO.2

- (a) Using a thin-bladed screwdriver, remove steering wheel cover lower No.2.

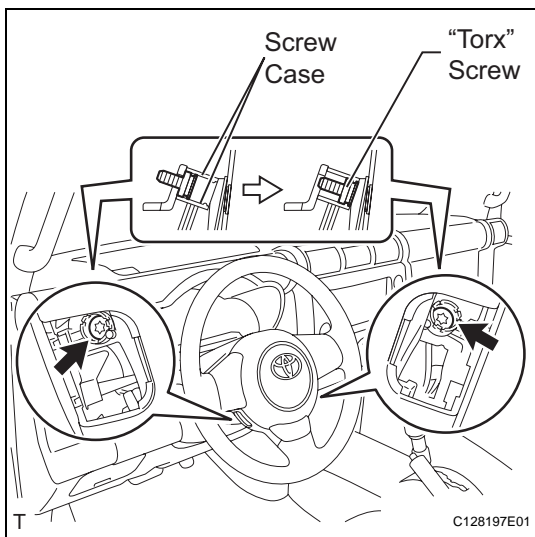
HINT:

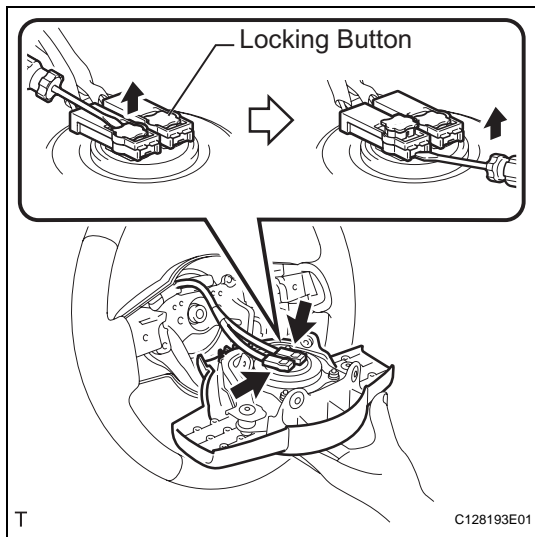
Tape up the screwdriver tip before use.



5. REMOVE STEERING PAD

- (a) Using "Torx" socket wrench (T30), loosen the 2 "Torx" screws until the groove along the screw circumference catches on the screw case.





- (b) Pull the steering pad out of the steering wheel assembly and support the steering pad with one hand as shown in the illustration.

NOTICE:

When removing the steering pad, do not pull the airbag wire harness.

- (c) Disconnect the horn connector.
(d) Disconnect the 2 connectors from the steering pad.

NOTICE:

When handling the airbag connector, take care not to damage the airbag wire harness.

- (e) Remove the steering pad.